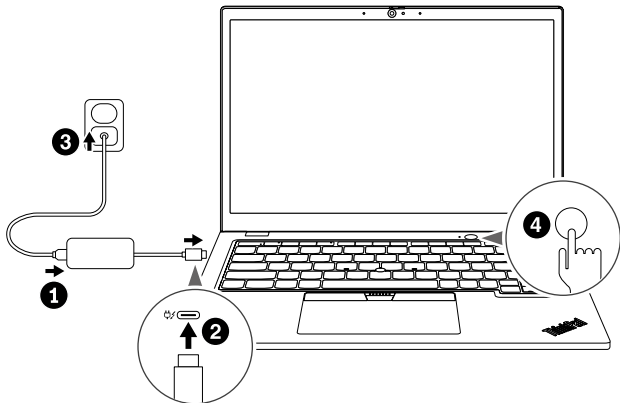
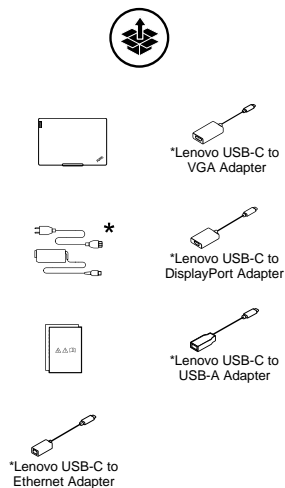




ThinkPad L13 Gen 5 / ThinkPad L13 2-in-1 Gen 5

Get started

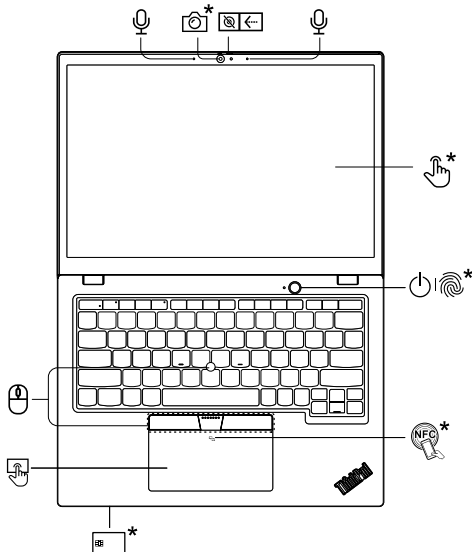
Get started | Get started | Get started | Get started | Get started



* For selected models | For selected models | For selected models | For selected models | For selected models

Overview (ThinkPad L13 Gen 5)

Overview | Overview | Overview | Overview | Overview



Press to log in to the computer*

Press to log in to the computer*

Press to log in to the computer*

Press to log in to the computer*

Press to log in to the computer*

Press to log in to the computer*



Navigate as a traditional mouse

Navigate as a traditional mouse

Navigate as a traditional mouse

Navigate as a traditional mouse

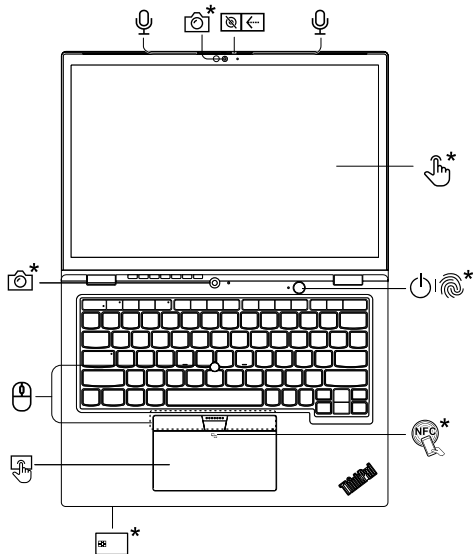
Navigate as a traditional mouse

Navigate as a traditional mouse

Navigate as a traditional mouse

Overview (ThinkPad L13 2-in-1 Gen 5)

Overview | Overview | Overview | Overview | Overview



Press to log in to the computer*

Press to log in to the computer*

Press to log in to the computer*

Press to log in to the computer*

Press to log in to the computer*

Press to log in to the computer*



Navigate as a traditional mouse

Navigate as a traditional mouse

Navigate as a traditional mouse

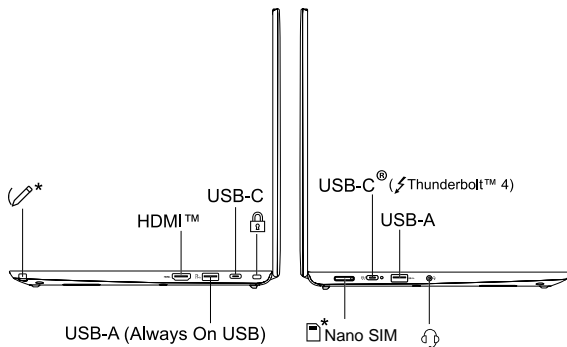
Navigate as a traditional mouse

Navigate as a traditional mouse

Navigate as a traditional mouse

Overview

Overview | Overview | Overview | Overview | Overview



Read the statement on USB transfer rate in the *User Guide*. To access the *User Guide*, refer to methods mentioned on the back cover.

Read the statement on USB transfer rate in the *User Guide*. To access the *User Guide*, refer to methods mentioned on the back cover.

Read the statement on USB transfer rate in the *User Guide*. To access the *User Guide*, refer to methods mentioned on the back cover.

Read the statement on USB transfer rate in the *User Guide*. To access the *User Guide*, refer to methods mentioned on the back cover.

Read the statement on USB transfer rate in the *User Guide*. To access the *User Guide*, refer to methods mentioned on the back cover.

Read the statement on USB transfer rate in the *User Guide*. To access the *User Guide*, refer to methods mentioned on the back cover.

Lenovo Commercial Vantage*

Access Commercial Vantage to adjust device settings and check for system updates.

Access Commercial Vantage to adjust device settings and check for system updates.

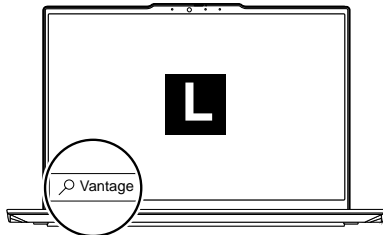
Access Commercial Vantage to adjust device settings and check for system updates.

Access Commercial Vantage to adjust device settings and check for system updates.

Access Commercial Vantage to adjust device settings and check for system updates.

Access Commercial Vantage to adjust device settings and check for system updates.

Access Commercial Vantage to adjust device settings and check for system updates.



Lenovo View*



Video Enhancer | Video Enhancer
Video Enhancer | Video Enhancer
Video Enhancer | Video Enhancer



Background Removal* | Background Removal*
Background Removal* | Background Removal*
Background Removal* | Background Removal*



[English]

Specific absorption rate (SAR)

YOUR DEVICE MEETS INTERNATIONAL GUIDELINES FOR EXPOSURE TO RADIO WAVES.

Refer to the following for 10g SAR limit and maximum reported SAR values:

10g SAR limit: 2 W/kg (body-worn SAR); 4 W/kg (limb SAR)

Maximum SAR with 0 mm separation distance: 1.599 W/kg (body-worn SAR); 1.599 W/kg (limb SAR)

For more information about SAR, refer to the *Safety and Warranty Guide* that came with your device.

European Union (EU) / United Kingdom (UK) — radio frequency and power

This radio equipment operates with the following frequency bands and maximum radio-frequency power:

Technology	Frequency [MHz] / band	Maximum transmit power
WLAN 802.11b/g/n/ax Bluetooth BR/EDR/LE	2400 - 2483.5	< 20 dBm
WLAN 802.11a/n/ac/ax	5150 - 5350; 5470 - 5725	< 23 dBm
WLAN 802.11a/n/ac/ax	5725 - 5875	< 13.98 dBm
WLAN 802.11ax	5945 - 6425	< 23 dBm
WWAN UMTS	1/3/8	< 25 dBm
WWAN LTE	1/3/7/8/20/28/34/38/40/41	< 24.5 dBm
NFC	13.56	< -5.31 dBμA/m@10m

Note: Not all wireless bands may be enabled depending on your product configuration.
Usage of this device is limited to indoor locations in the bands 5150 - 5350 MHz and 5945 - 6425 MHz.

[English]

Specific absorption rate (SAR)

YOUR DEVICE MEETS INTERNATIONAL GUIDELINES FOR EXPOSURE TO RADIO WAVES.

Refer to the following for 10g SAR limit and maximum reported SAR values:

10g SAR limit: 2 W/kg (body-worn SAR); 4 W/kg (limb SAR)

Maximum SAR with 0 mm separation distance: 1.599 W/kg (body-worn SAR); 1.599 W/kg (limb SAR)

For more information about SAR, refer to the *Safety and Warranty Guide* that came with your device.

European Union (EU) / United Kingdom (UK) — radio frequency and power

This radio equipment operates with the following frequency bands and maximum radio-frequency power:

Technology	Frequency [MHz] / band	Maximum transmit power
WLAN 802.11b/g/n/ax Bluetooth BR/EDR/LE	2400 - 2483.5	< 20 dBm
WLAN 802.11a/n/ac/ax	5150 - 5350; 5470 - 5725	< 23 dBm
WLAN 802.11a/n/ac/ax	5725 - 5875	< 13.98 dBm
WLAN 802.11ax	5945 - 6425	< 23 dBm
WWAN UMTS	1/3/8	< 25 dBm
WWAN LTE	1/3/7/8/20/28/34/38/40/41	< 24.5 dBm
NFC	13.56	< -5.31 dBμA/m@10m

Note: Not all wireless bands may be enabled depending on your product configuration.
Usage of this device is limited to indoor locations in the bands 5150 - 5350 MHz and 5945 - 6425 MHz.

[English]

Specific absorption rate (SAR)

YOUR DEVICE MEETS INTERNATIONAL GUIDELINES FOR EXPOSURE TO RADIO WAVES.

Refer to the following for 10g SAR limit and maximum reported SAR values:

10g SAR limit: 2 W/kg (body-worn SAR); 4 W/kg (limb SAR)

Maximum SAR with 0 mm separation distance: 1.599 W/kg (body-worn SAR); 1.599 W/kg (limb SAR)

For more information about SAR, refer to the *Safety and Warranty Guide* that came with your device.

European Union (EU) / United Kingdom (UK) — radio frequency and power

This radio equipment operates with the following frequency bands and maximum radio-frequency power:

Technology	Frequency [MHz] / band	Maximum transmit power
WLAN 802.11b/g/n/ax Bluetooth BR/EDR/LE	2400 - 2483.5	< 20 dBm
WLAN 802.11a/n/ac/ax	5150 - 5350; 5470 - 5725	< 23 dBm
WLAN 802.11a/n/ac/ax	5725 - 5875	< 13.98 dBm
WLAN 802.11ax	5945 - 6425	< 23 dBm
WWAN UMTS	1/3/8	< 25 dBm
WWAN LTE	1/3/7/8/20/28/34/38/40/41	< 24.5 dBm

Technology	Frequency [MHz] / band	Maximum transmit power
NFC	13.56	< -5.31 dBμA/m@10m

Note: Not all wireless bands may be enabled depending on your product configuration.
Usage of this device is limited to indoor locations in the bands 5150 - 5350 MHz and 5945 - 6425 MHz.

[English]

Specific absorption rate (SAR)

YOUR DEVICE MEETS INTERNATIONAL GUIDELINES FOR EXPOSURE TO RADIO WAVES.

Refer to the following for 10g SAR limit and maximum reported SAR values:

10g SAR limit: 2 W/kg (body-worn SAR); 4 W/kg (limb SAR)

Maximum SAR with 0 mm separation distance: 1.599 W/kg (body-worn SAR); 1.599 W/kg (limb SAR)

For more information about SAR, refer to the *Safety and Warranty Guide* that came with your device.

European Union (EU) / United Kingdom (UK) — radio frequency and power

This radio equipment operates with the following frequency bands and maximum radio-frequency power:

Technology	Frequency [MHz] / band	Maximum transmit power
WLAN 802.11b/g/n/ax Bluetooth BR/EDR/LE	2400 - 2483.5	< 20 dBm
WLAN 802.11a/n/ac/ax	5150 - 5350; 5470 - 5725	< 23 dBm
WLAN 802.11a/n/ac/ax	5725 - 5875	< 13.98 dBm
WLAN 802.11ax	5945 - 6425	< 23 dBm
WWAN UMTS	1/3/8	< 25 dBm
WWAN LTE	1/3/7/8/20/28/34/38/40/41	< 24.5 dBm
NFC	13.56	< -5.31 dBμA/m@10m

Note: Not all wireless bands may be enabled depending on your product configuration.
Usage of this device is limited to indoor locations in the bands 5150 - 5350 MHz and 5945 - 6425 MHz.

[English]

Specific absorption rate (SAR)

YOUR DEVICE MEETS INTERNATIONAL GUIDELINES FOR EXPOSURE TO RADIO WAVES.

Refer to the following for 10g SAR limit and maximum reported SAR values:

10g SAR limit: 2 W/kg (body-worn SAR); 4 W/kg (limb SAR)

Maximum SAR with 0 mm separation distance: 1.599 W/kg (body-worn SAR); 1.599 W/kg (limb SAR)

For more information about SAR, refer to the *Safety and Warranty Guide* that came with your device.

European Union (EU) / United Kingdom (UK) — radio frequency and power

This radio equipment operates with the following frequency bands and maximum radio-frequency power:

Technology	Frequency [MHz] / band	Maximum transmit power
WLAN 802.11b/g/n/ax Bluetooth BR/EDR/LE	2400 - 2483.5	< 20 dBm
WLAN 802.11a/n/ac/ax	5150 - 5350; 5470 - 5725	< 23 dBm
WLAN 802.11a/n/ac/ax	5725 - 5875	< 13.98 dBm
WLAN 802.11ax	5945 - 6425	< 23 dBm
WWAN UMTS	1/3/8	< 25 dBm
WWAN LTE	1/3/7/8/20/28/34/38/40/41	< 24.5 dBm
NFC	13.56	< -5.31 dBμA/m@10m

Note: Not all wireless bands may be enabled depending on your product configuration.
Usage of this device is limited to indoor locations in the bands 5150 - 5350 MHz and 5945 - 6425 MHz.

[English]

Specific absorption rate (SAR)

YOUR DEVICE MEETS INTERNATIONAL GUIDELINES FOR EXPOSURE TO RADIO WAVES.

Refer to the following for 10g SAR limit and maximum reported SAR values:

10g SAR limit: 2 W/kg (body-worn SAR); 4 W/kg (limb SAR)

Maximum SAR with 0 mm separation distance: 1.599 W/kg (body-worn SAR); 1.599 W/kg (limb SAR)

For more information about SAR, refer to the *Safety and Warranty Guide* that came with your device.

European Union (EU) / United Kingdom (UK) — radio frequency and power

This radio equipment operates with the following frequency bands and maximum radio-frequency power:

Technology	Frequency [MHz] / band	Maximum transmit power
WLAN 802.11b/g/n/ax Bluetooth BR/EDR/LE	2400 - 2483.5	< 20 dBm
WLAN 802.11a/n/ac/ax	5150 - 5350; 5470 - 5725	< 23 dBm
WLAN 802.11a/n/ac/ax	5725 - 5875	< 13.98 dBm
WLAN 802.11ax	5945 - 6425	< 23 dBm
WWAN UMTS	1/3/8	< 25 dBm
WWAN LTE	1/3/7/8/20/28/34/38/40/41	< 24.5 dBm
NFC	13.56	< -5.31 dBμA/m@10m

Note: Not all wireless bands may be enabled depending on your product configuration.
Usage of this device is limited to indoor locations in the bands 5150 - 5350 MHz and 5945 - 6425 MHz.

[English]

Specific absorption rate (SAR)

YOUR DEVICE MEETS INTERNATIONAL GUIDELINES FOR EXPOSURE TO RADIO WAVES.

Refer to the following for 10g SAR limit and maximum reported SAR values:

10g SAR limit: 2 W/kg (body-worn SAR); 4 W/kg (limb SAR)

Maximum SAR with 0 mm separation distance: 1.599 W/kg (body-worn SAR); 1.599 W/kg (limb SAR)

For more information about SAR, refer to the *Safety and Warranty Guide* that came with your device.

European Union (EU) / United Kingdom (UK) — radio frequency and power

This radio equipment operates with the following frequency bands and maximum radio-frequency power:

Technology	Frequency [MHz] / band	Maximum transmit power
WLAN 802.11b/g/n/ax Bluetooth BR/EDR/LE	2400 - 2483.5	< 20 dBm
WLAN 802.11a/n/ac/ax	5150 - 5350; 5470 - 5725	< 23 dBm
WLAN 802.11a/n/ac/ax	5725 - 5875	< 13.98 dBm
WLAN 802.11ax	5945 - 6425	< 23 dBm
WWAN UMTS	1/3/8	< 25 dBm
WWAN LTE	1/3/7/8/20/28/34/38/40/41	< 24.5 dBm
NFC	13.56	< -5.31 dBμA/m@10m

Note: Not all wireless bands may be enabled depending on your product configuration.

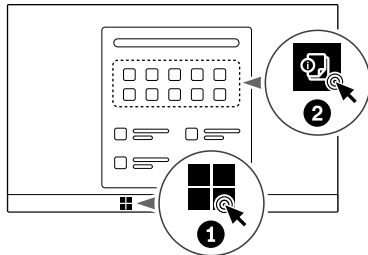
Usage of this device is limited to indoor locations in the bands 5150 - 5350 MHz and 5945 - 6425 MHz.

For Decoding Position Only

PN: xxxxxxxxx Printed in China

Access User Guide

Access User Guide | Access User Guide | Access User Guide | Access User Guide | Access User Guide



First Edition (April 2024)

© Copyright Lenovo 2024.

LIMITED AND RESTRICTED RIGHTS NOTICE: If data or software is delivered pursuant to a General Services Administration "GSA" contract, use, reproduction, or disclosure is subject to restrictions set forth in Contract No. GS-35F-05925.

Lenovo, Lenovo logo, ThinkPad, and ThinkPad logo are trademarks of Lenovo. Thunderbolt is the trademark of Intel Corporation or its subsidiaries in the U.S. and/or other countries. The terms HDMI and HDMI High-Definition Multimedia Interface are trademarks or registered trademarks of HDMI Licensing LLC in the United States and other countries. USB-C® is a registered trademark of USB Implementers Forum. All other trademarks are the property of their respective owners.



Reduce
Reuse
Recycle

For FSC Mix logo only